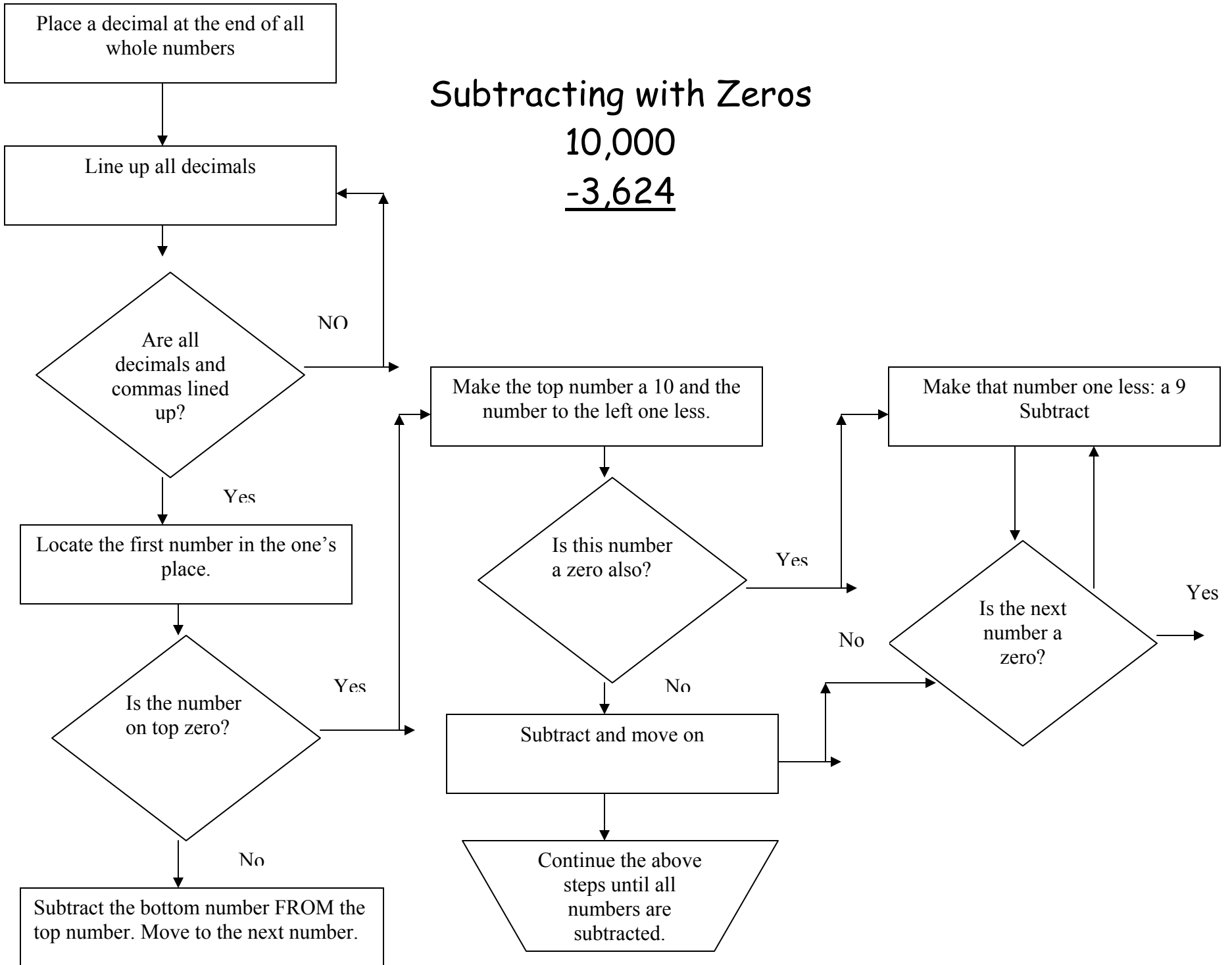


# Subtracting with Zeros

$$\begin{array}{r} 10,000 \\ -3,624 \\ \hline \end{array}$$



Place a decimal at the end of all whole numbers

Line up all decimals

Are all decimals and commas lined up?

Locate the first number in the one's place.

Is the number on top zero?

Subtract the bottom number FROM the top number. Move to the next number.

Make the top number a 10 and the number to the left one less.

Is this number a zero also?

Subtract and move on

Continue the above steps until all numbers are subtracted.

Make that number one less: a 9 Subtract

Is the next number a zero?