



Pekin Public Schools District 108

District 108

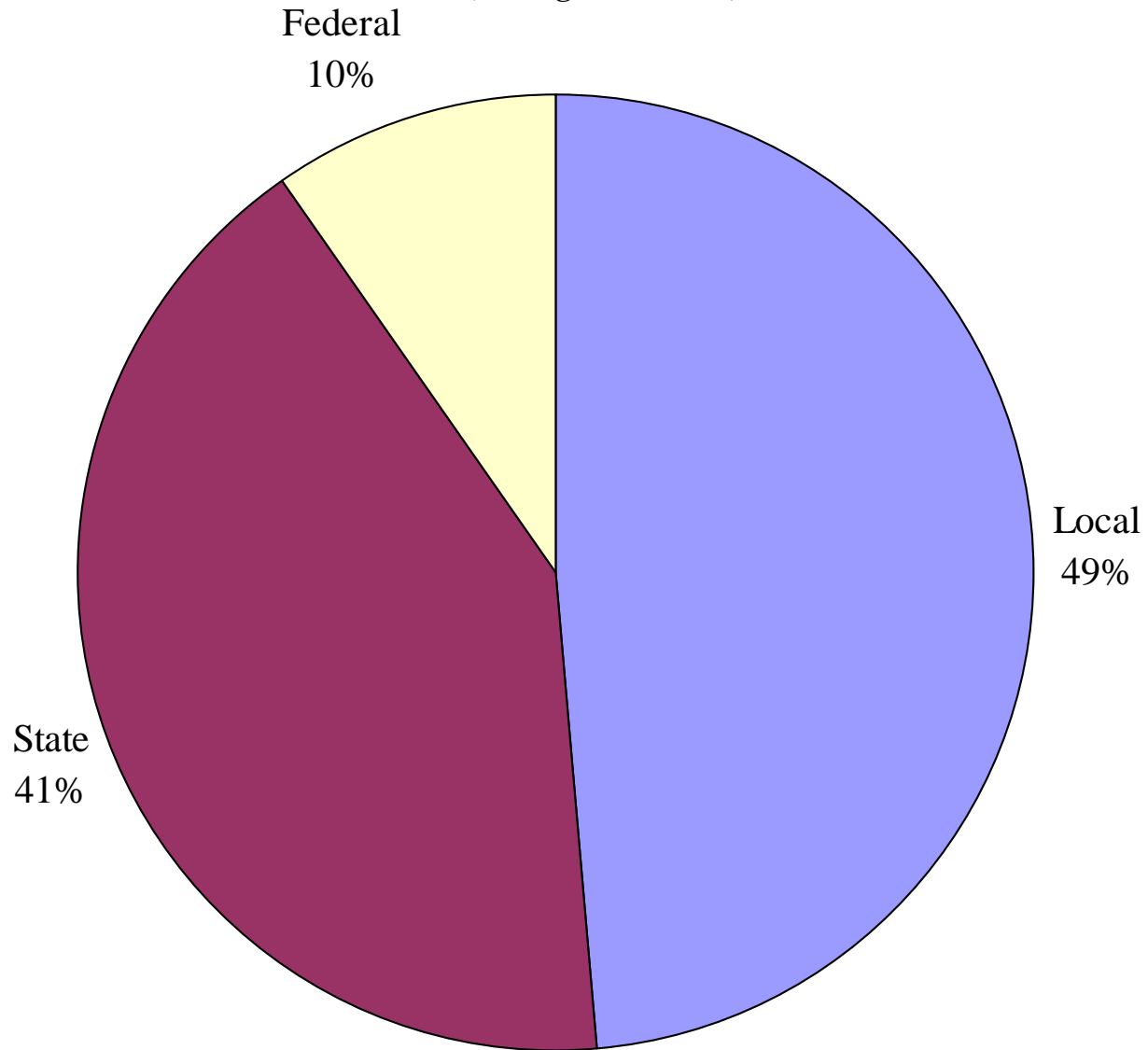
Informational Meeting

Presentation Agenda

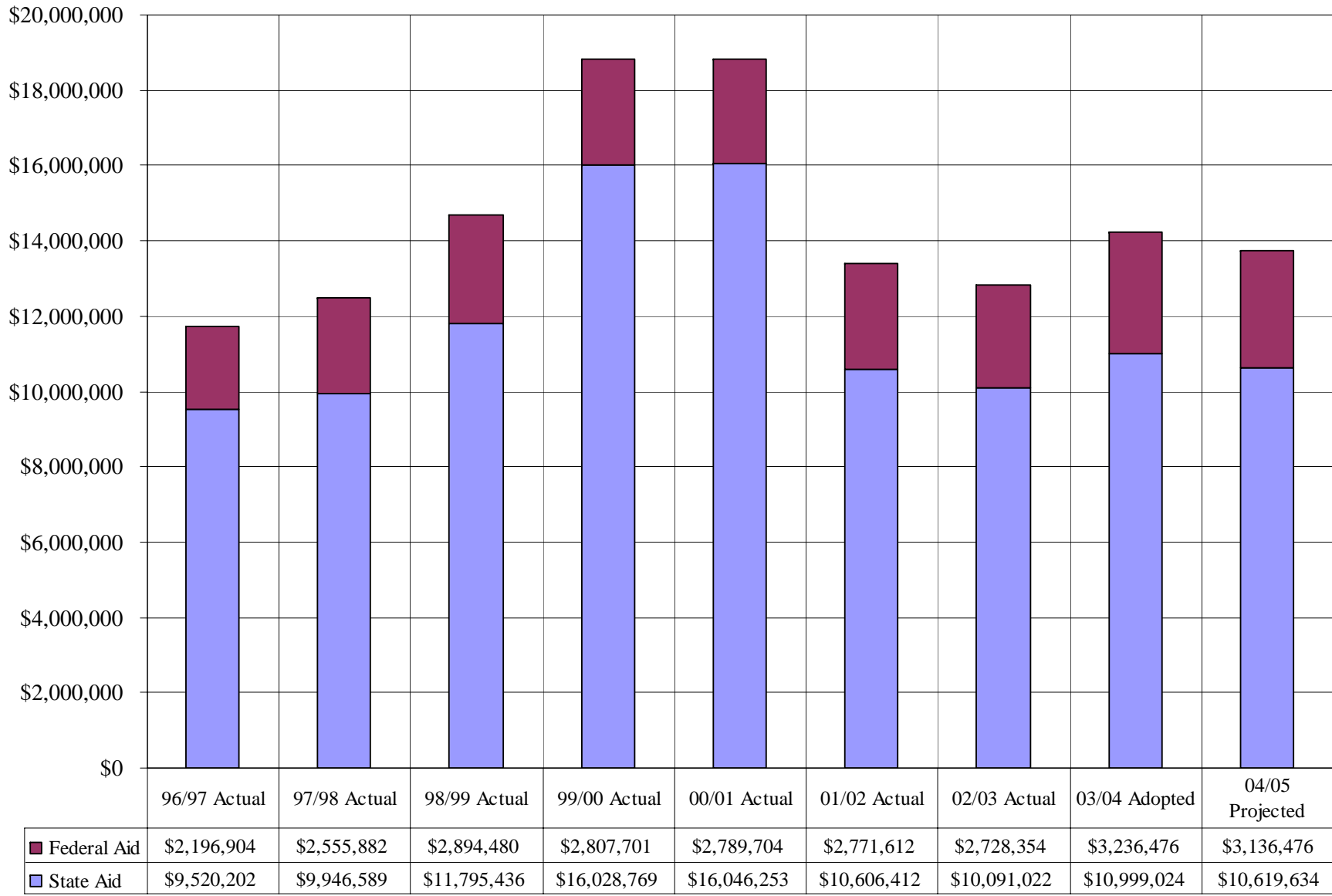
- Expenditure & Revenue Overview
- Local Funding Factors History
- Board Approved Solutions
- Impact on Property Taxes
- Questions & Discussion

Pekin District 108 Revenue Sources

(Average 1996-2005)

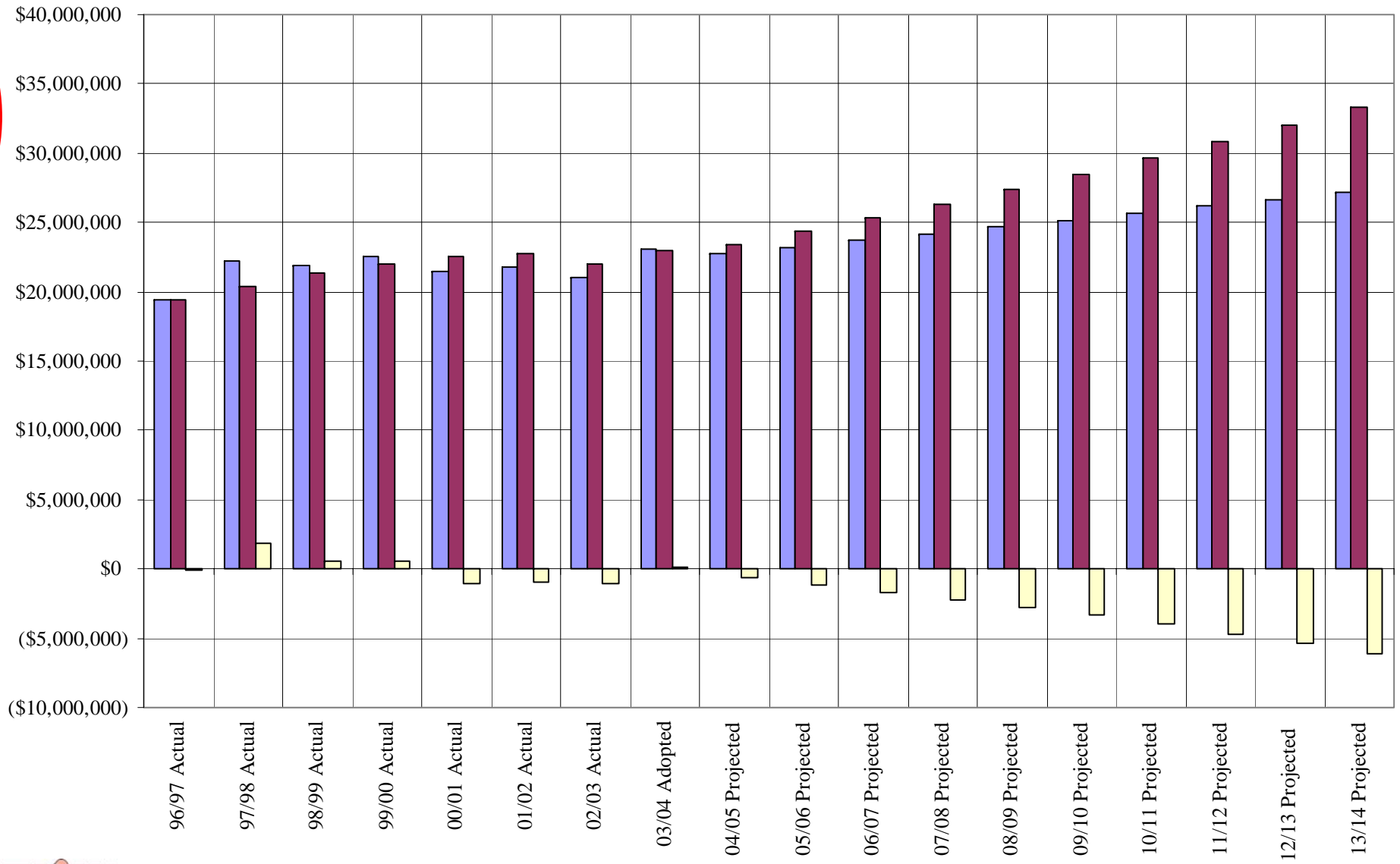


District 108 Federal & State Revenue



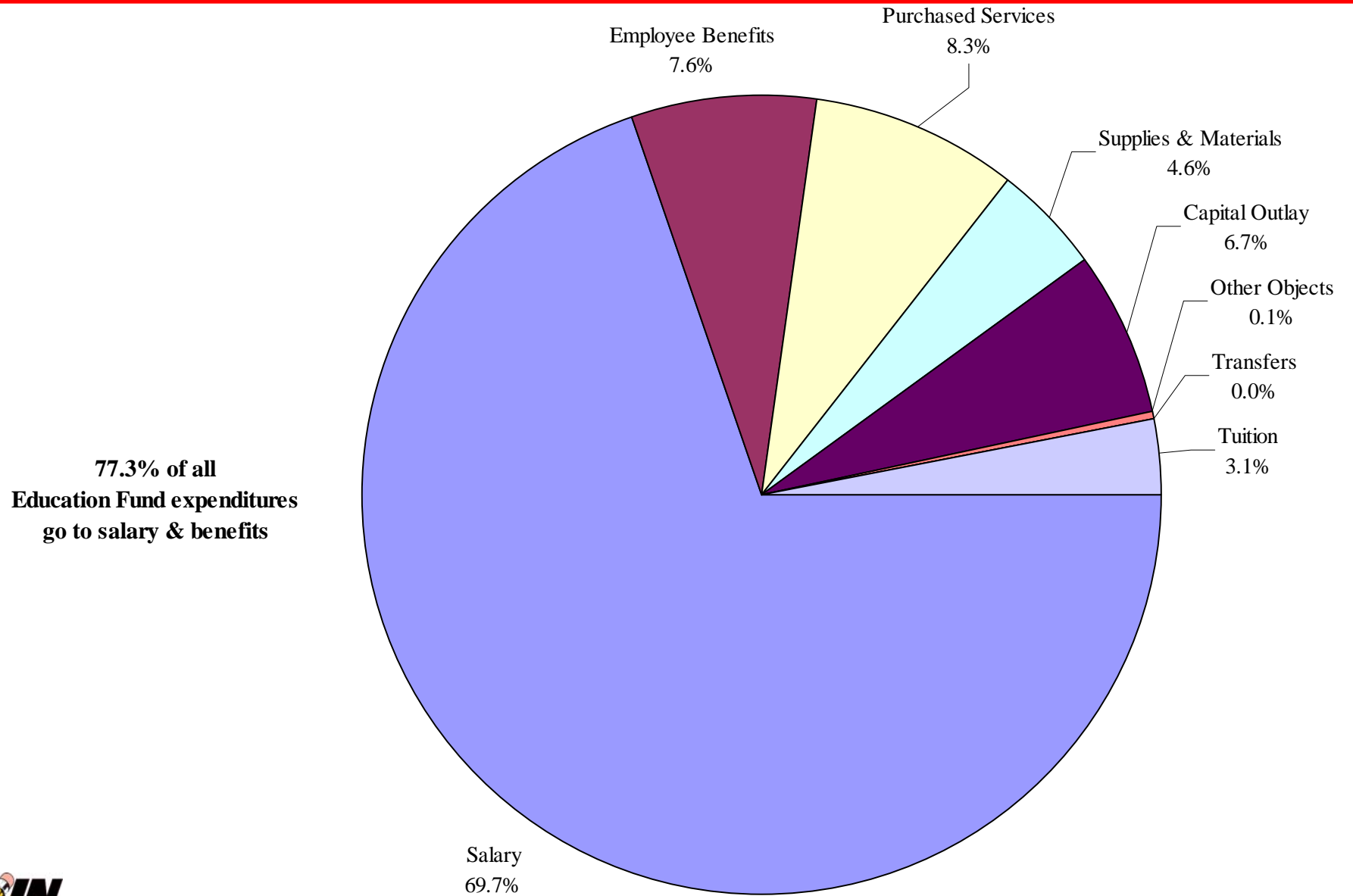
Pekin District #108 Education Fund History

(Projections assume 2% Rev increase and 4% Exp increase in all funds except B&I)



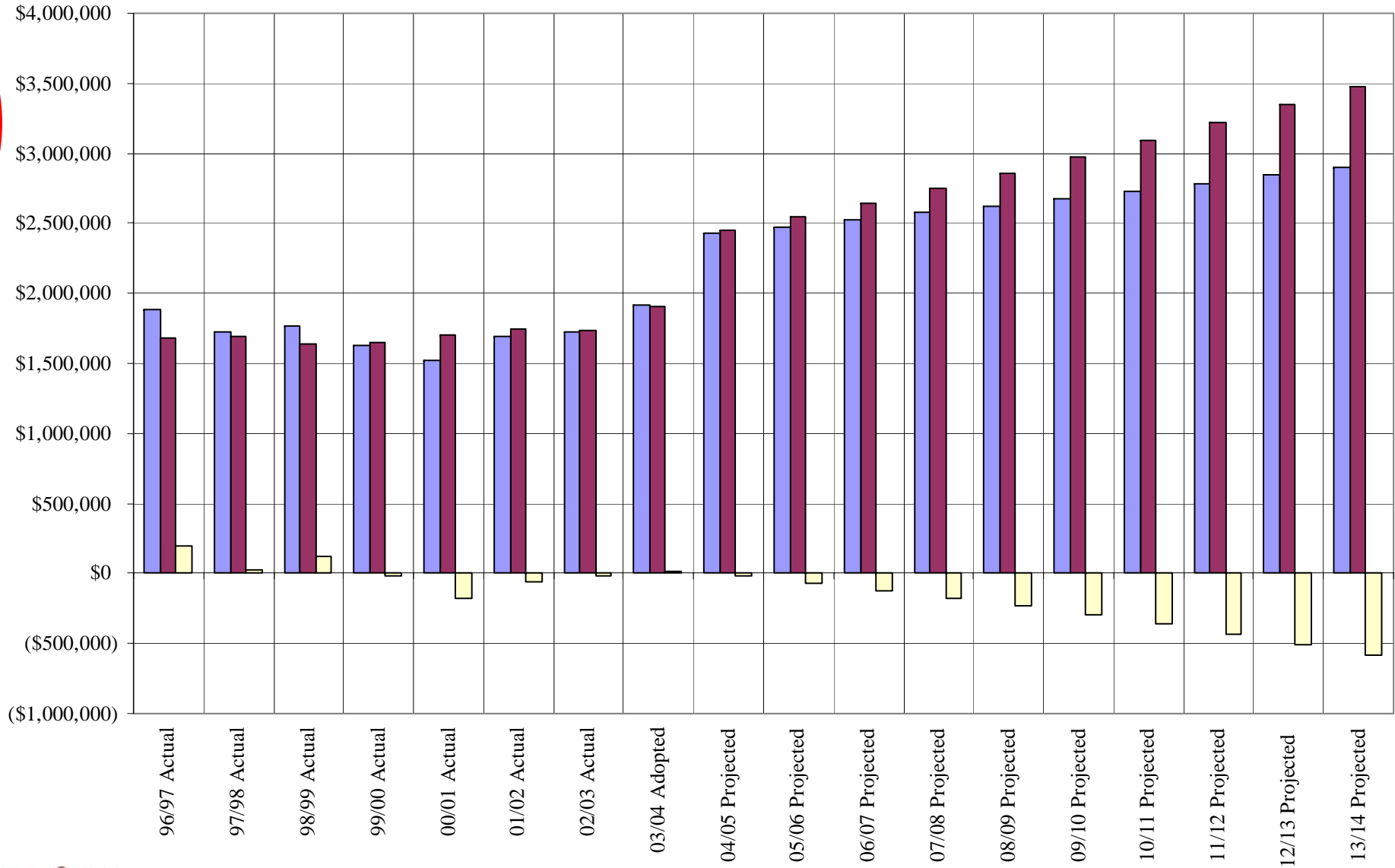
■ Total Revenue
 ■ Total Expenditures
 ■ Revenues-Expenditures

Pekin District #108 Education Fund Expenditures per Item (1996-2004)



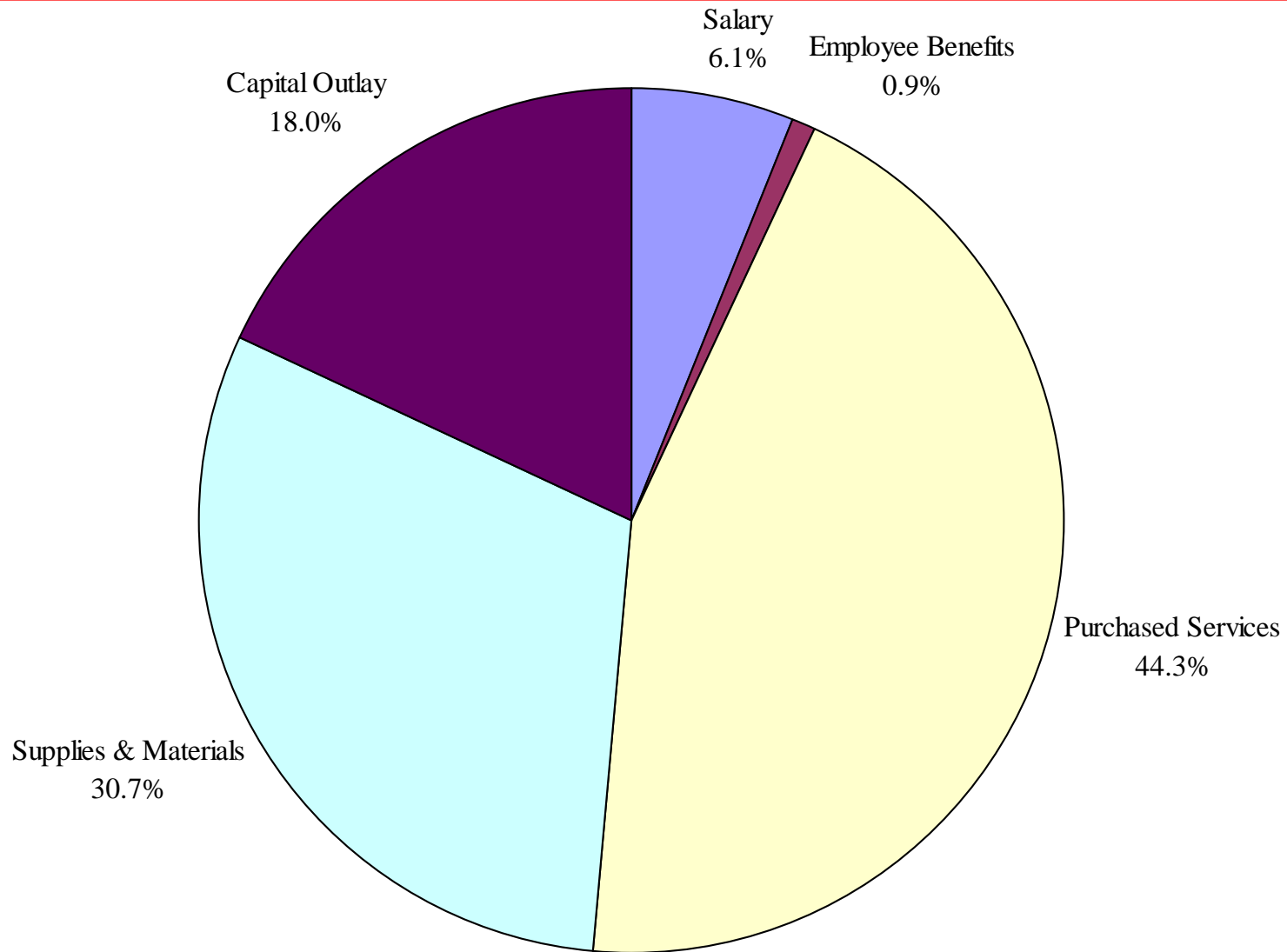
Pekin District #108 Operations and Maintenance Fund History

(Projections assume 2% Rev increase and 4% Exp increase in all funds except B&I)



■ Total Revenue
 ■ Total Expenditures
 ■ Revenues-Expenditures

Pekin District #108 Operations & Maintenance Expenditures per Item (1996-2004)

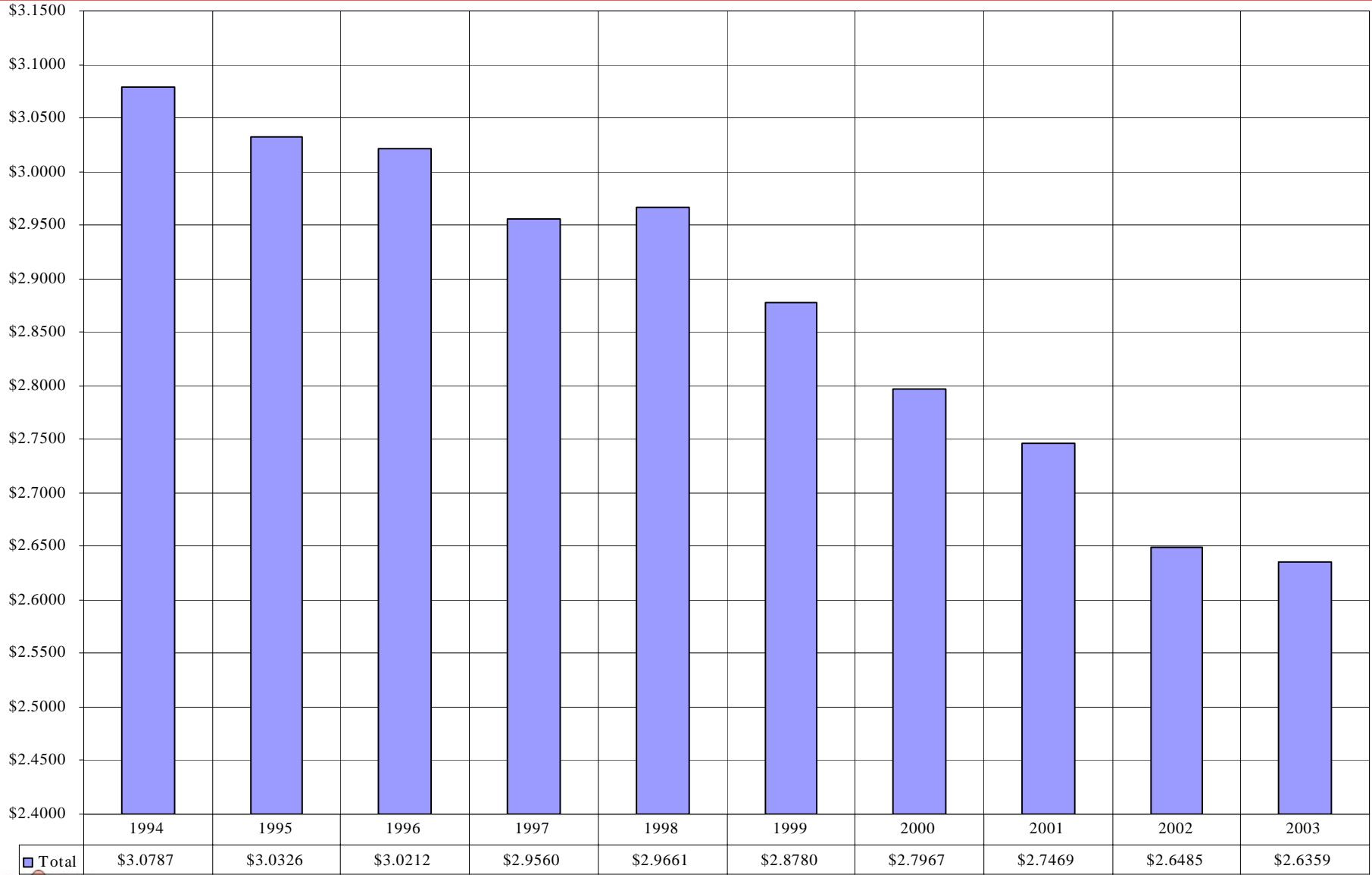




Local Funding Factors

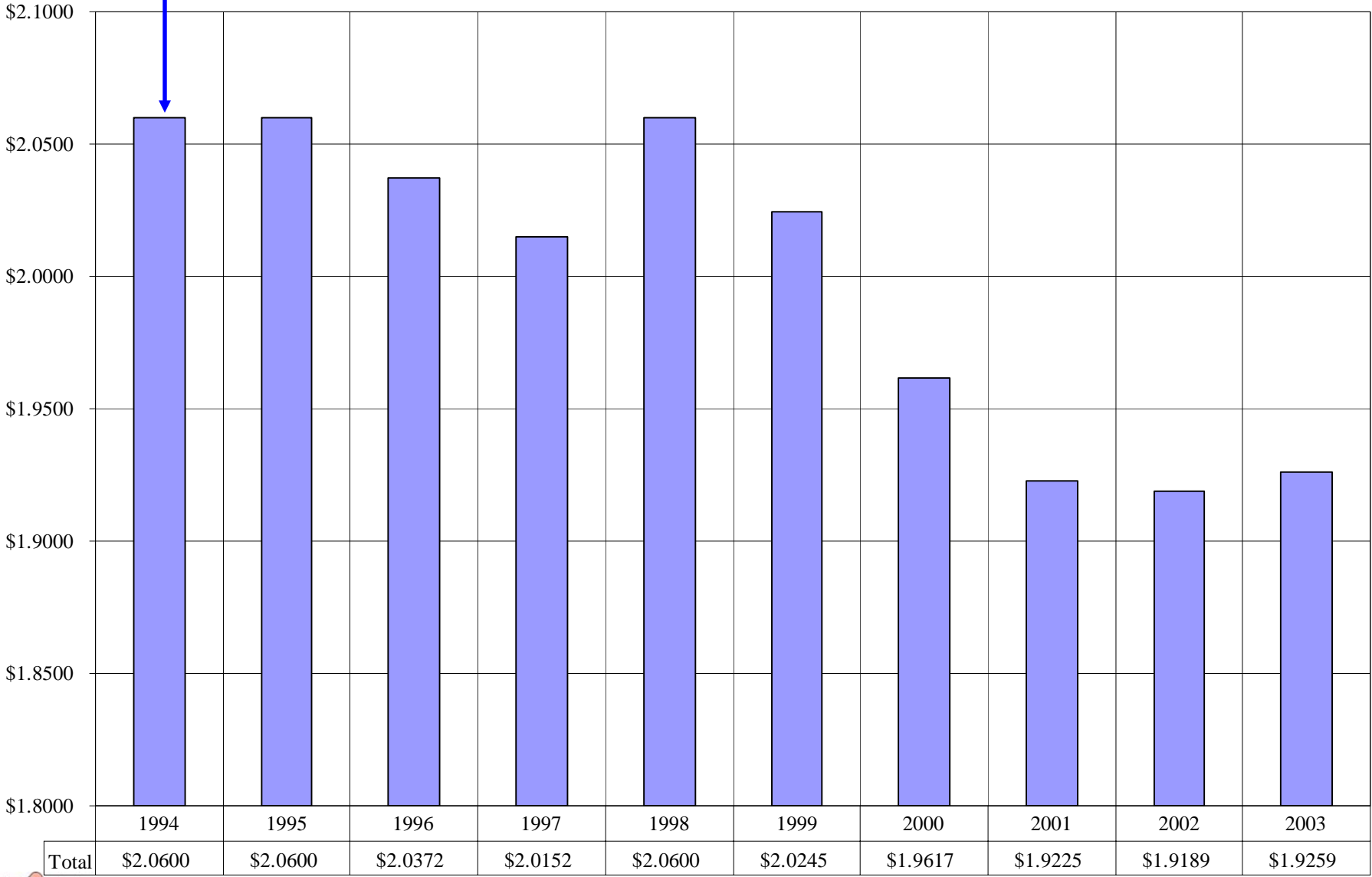
History

Pekin District 108 Tax Rate History



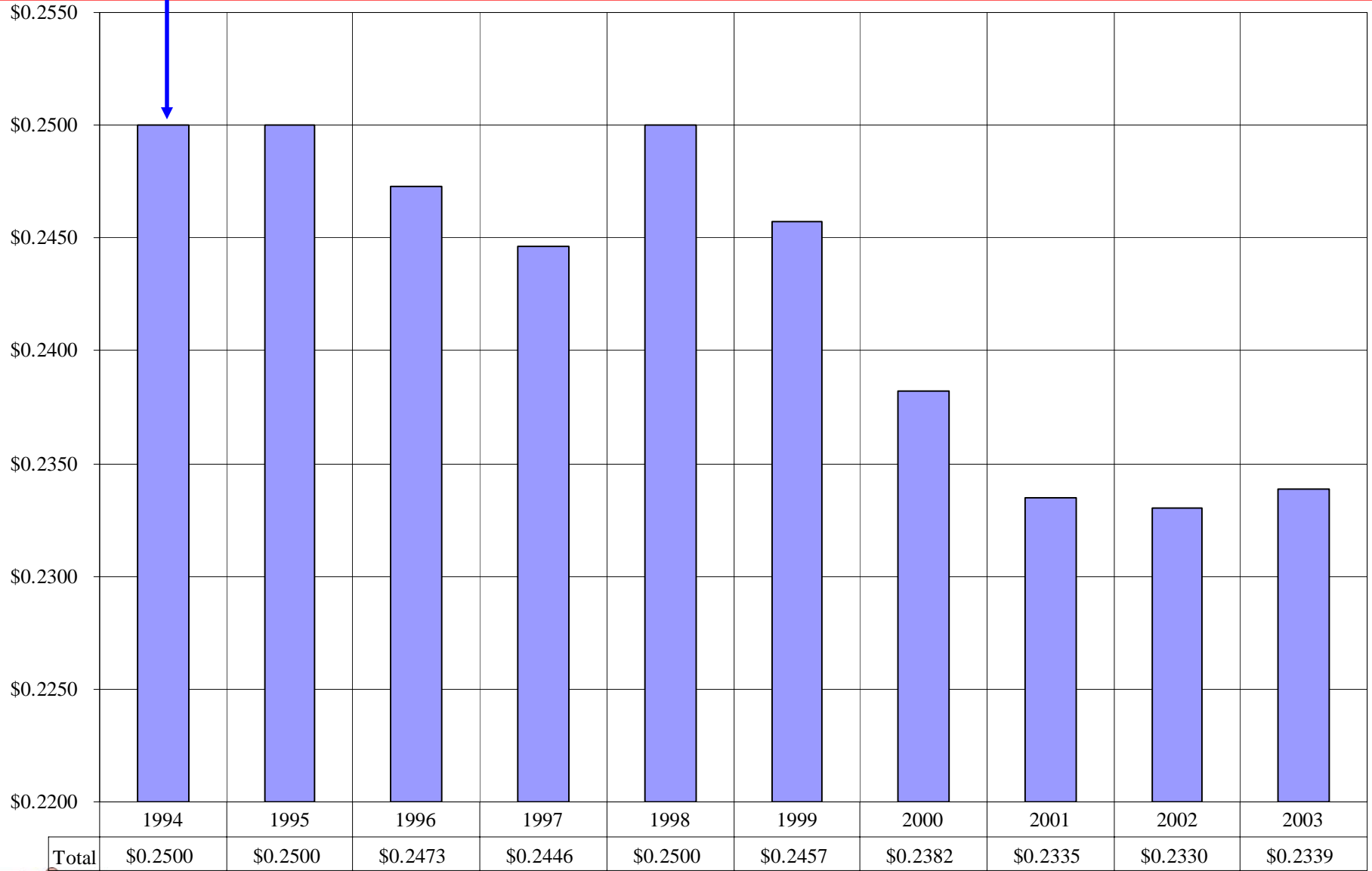
**Legal
Limit**

Pekin District 108 Education Fund Tax Rate History

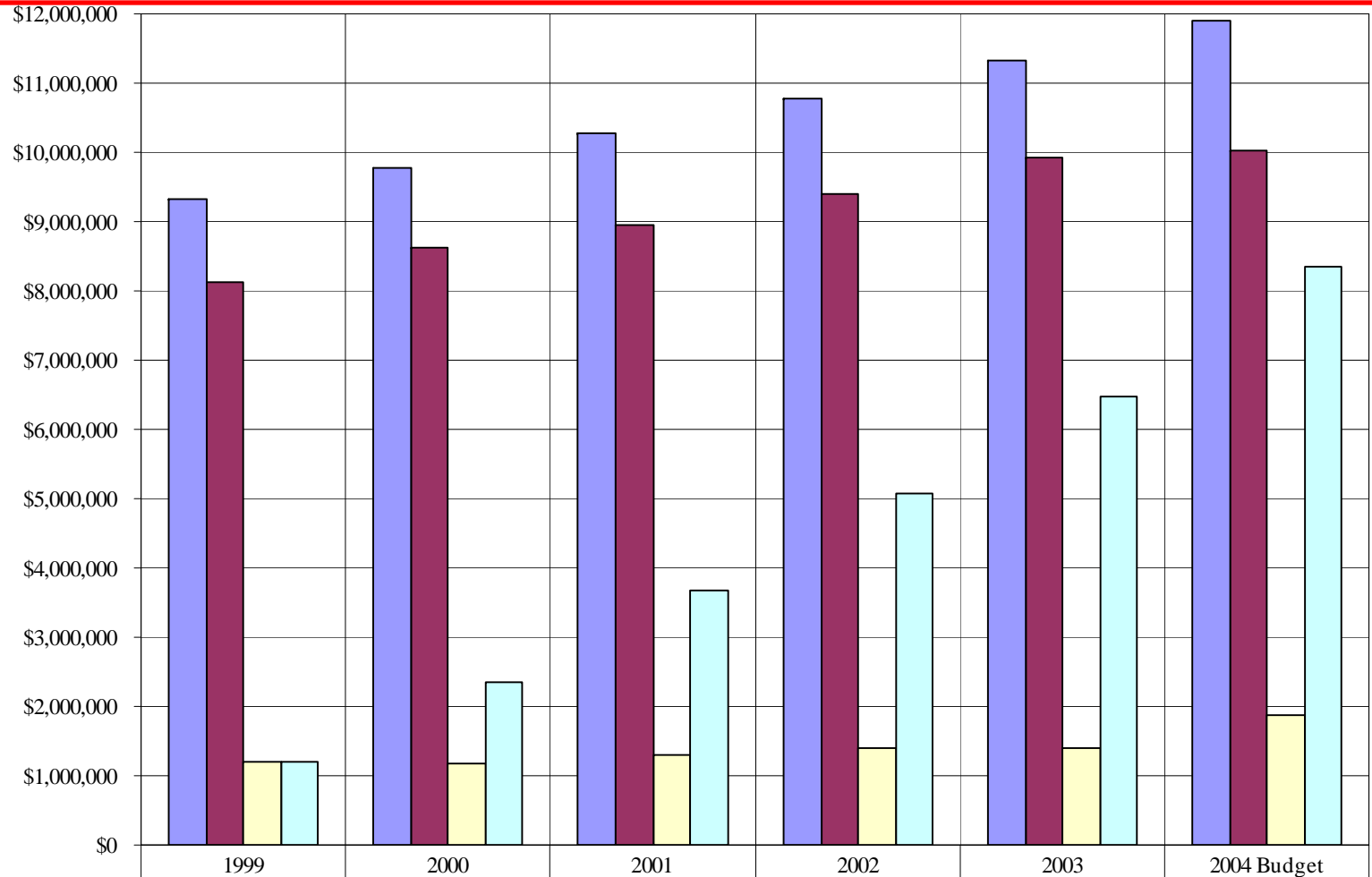


**Legal
Limit**

Pekin District 108 Operations & Maintenance Fund Tax Rate History



Pekin District 108 Local Revenue & Tax Cap (PTELL) Summary



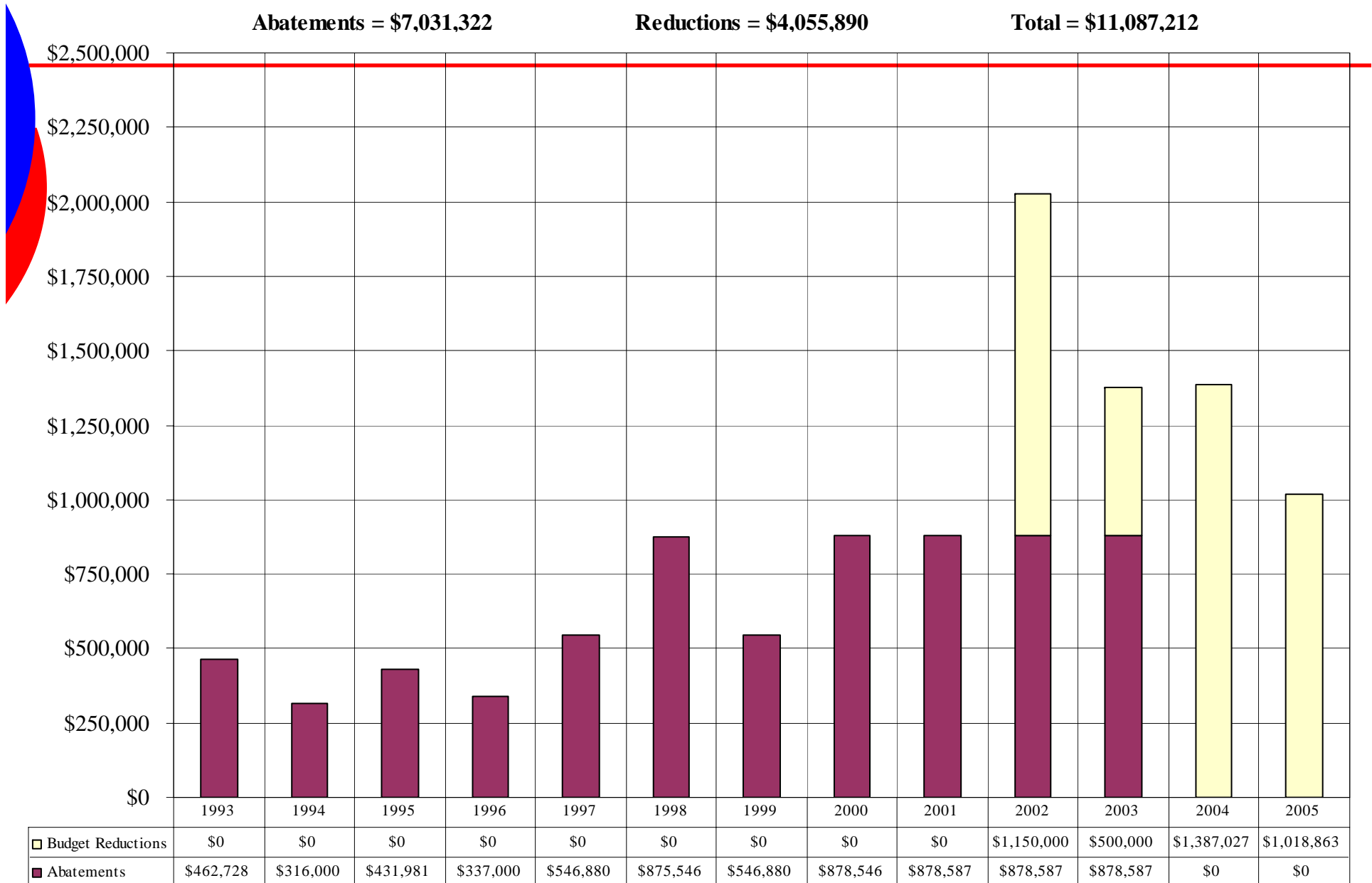
■ Sum of Extension Without Tax Caps	\$9,318,079	\$9,783,983	\$10,273,182	\$10,786,841	\$11,326,183	\$11,892,492
■ Sum of Local Revenue With Tax Caps	\$8,121,020	\$8,620,402	\$8,962,196	\$9,387,675	\$9,917,035	\$10,018,708
□ Sum of Difference	\$1,197,059	\$1,163,581	\$1,310,986	\$1,399,166	\$1,409,148	\$1,873,784
□ Sum of Total Difference	\$1,197,059	\$2,360,640	\$3,671,626	\$5,070,792	\$6,479,941	\$8,353,725

District 108 Abatements & Budget Reductions

Abatements = \$7,031,322

Reductions = \$4,055,890

Total = \$11,087,212



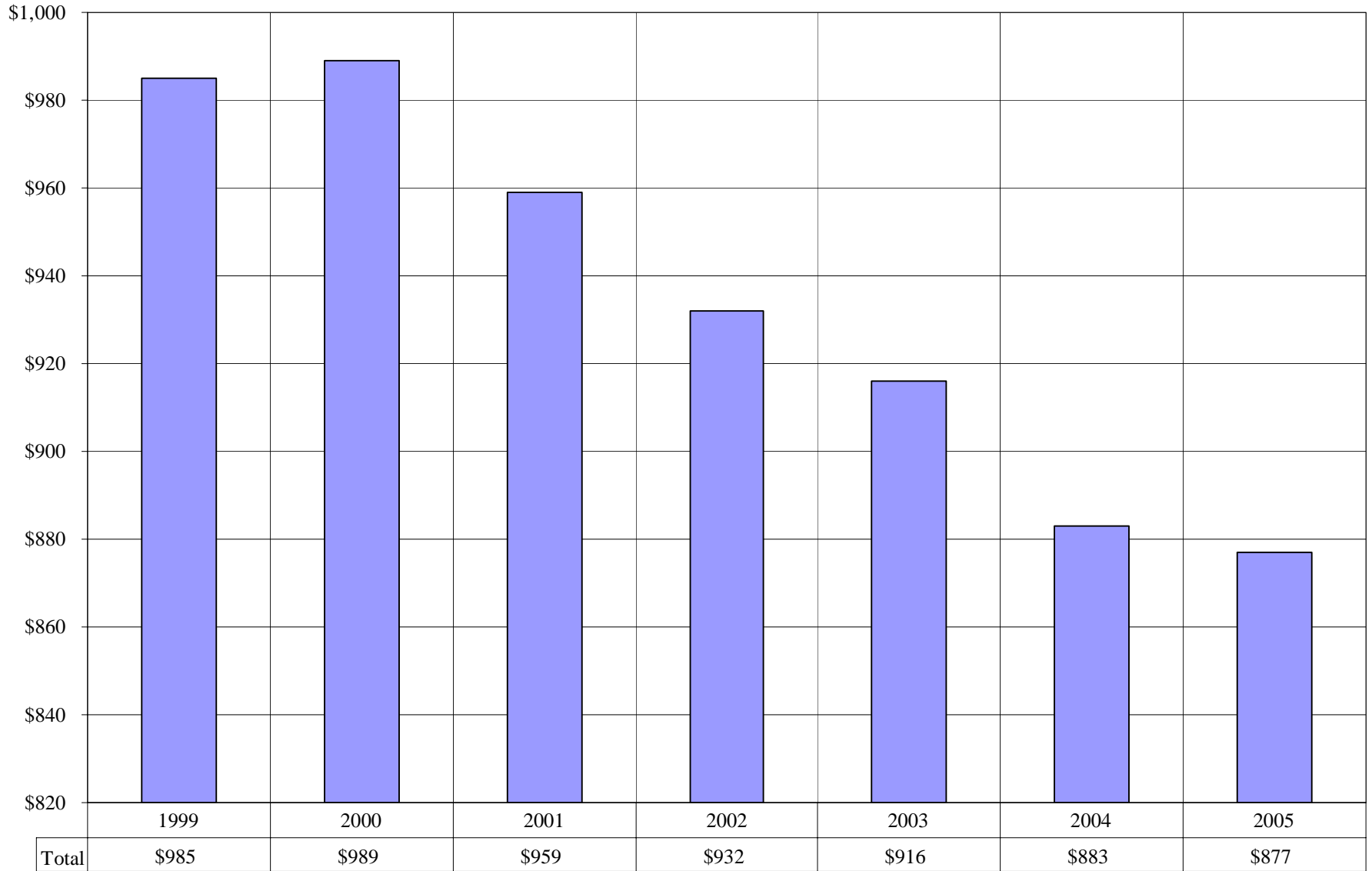
2004-05 Studies to be Conducted

- Consolidation
 - District 108 & PCHS
- Support & Special Area Positions
 - Special Education Service Teams
 - Learning Center Teachers
 - Counselors
- Principals & Assistant Principals
- Special Area Positions
 - K-6 Art, Music, PE, etc.
- After School Programs
- Consider Closing School
- Holistic Accountability Plan

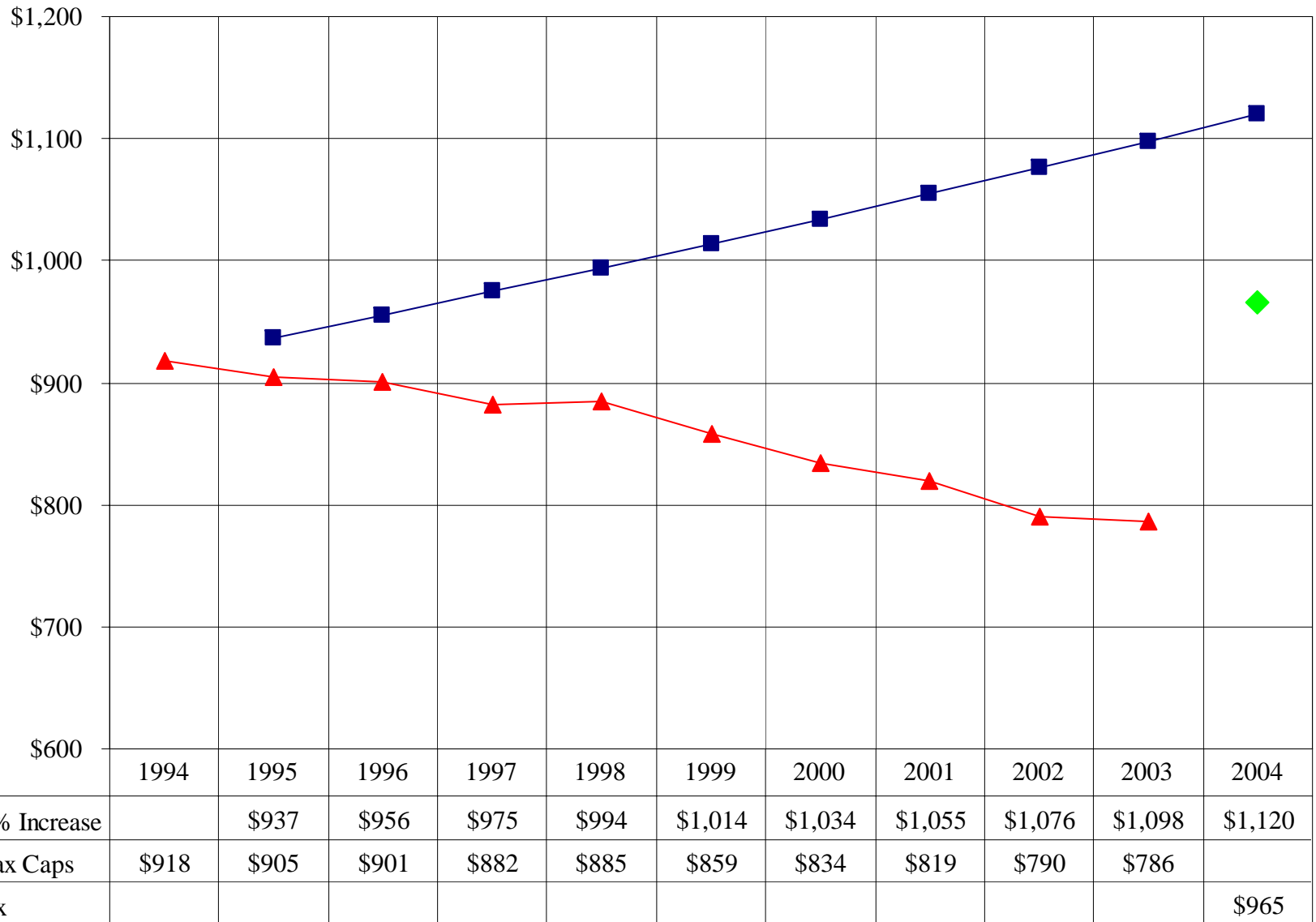
“Next” Budget Reduction Items

- Eliminate Jr. High Industrial Technology
- Eliminate Orchestra/Suzuki, Band, & Extra-Curricular Programs
- Eliminate 2 intermediate 5.75 Learning Center Asst. positions
- Eliminate 2 Jr. High Office Clerk positions
- Reduce 4 Intermediate Connections Teachers
- Increase class sizes
- Eliminate Additional Personnel Necessary to Recommend Balanced Budget to Board of Education

Pekin District 108 Average Taxes



District 108 Estimated Tax Scenarios \$100,000 Home

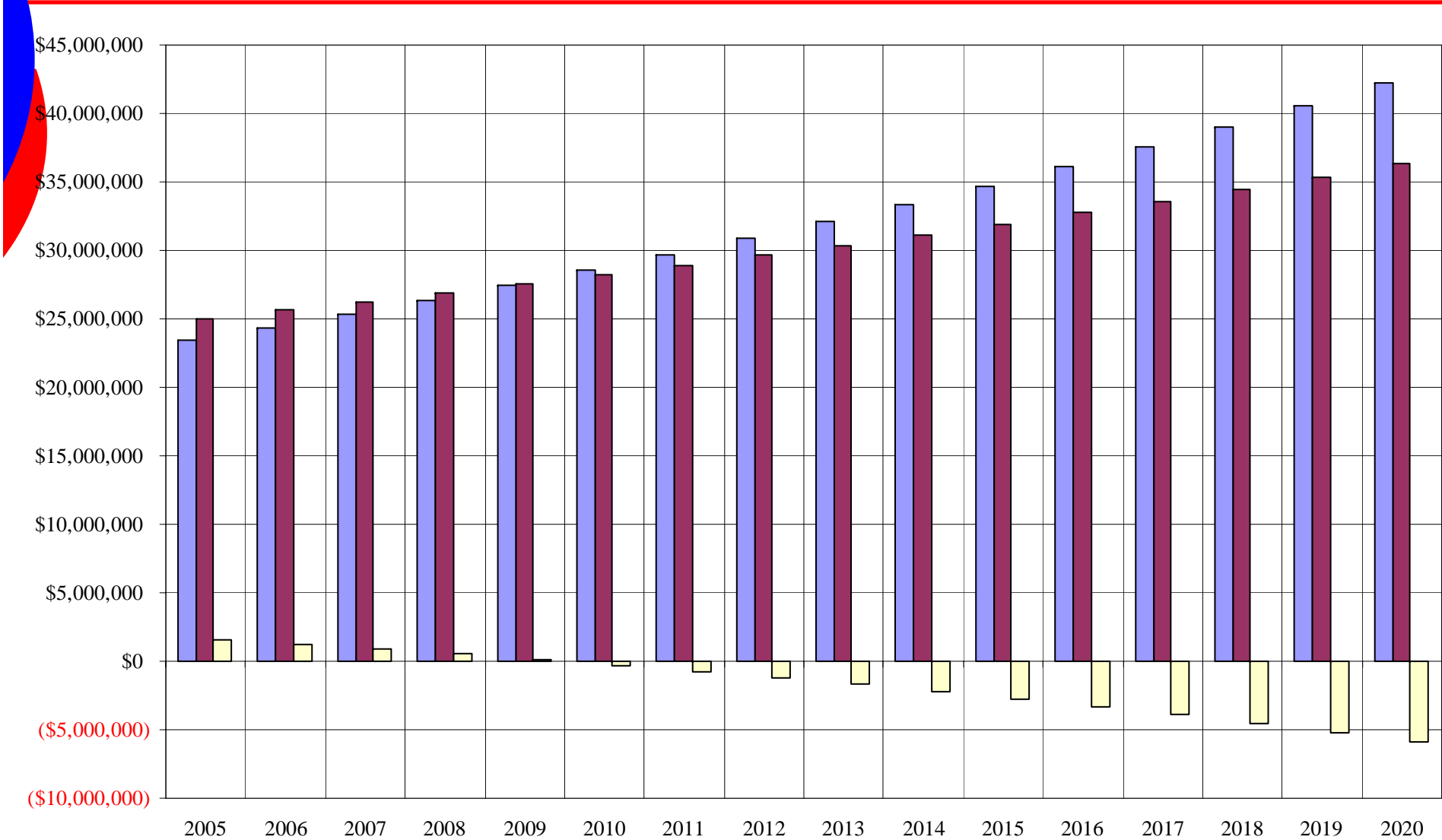




Board Approved

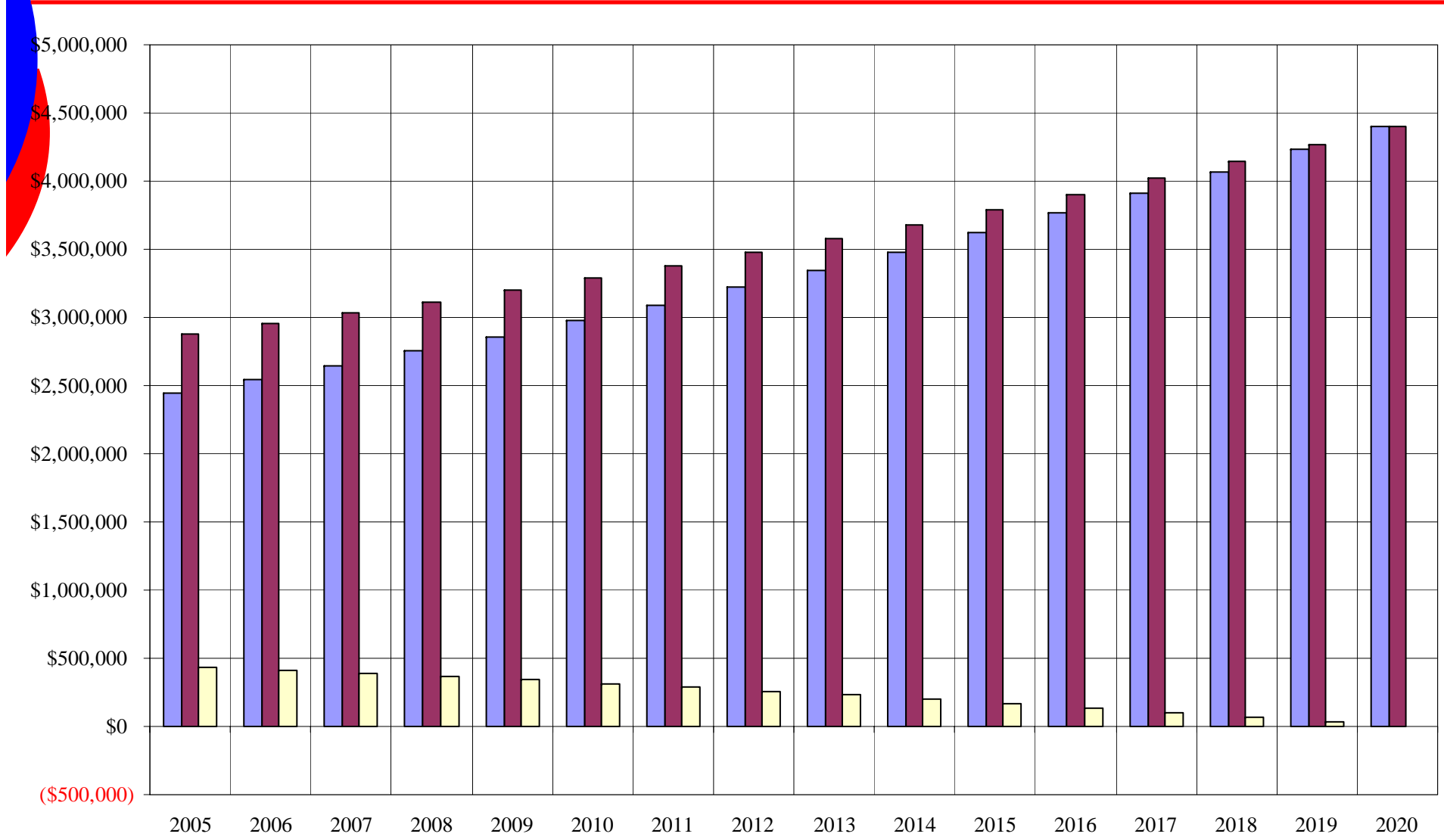
Solutions

Pekin District 108 Education Fund Rate Increase (\$.50)
(2% Increase in Revenue & 4% Increase in Expenses)



■ Average of Expenditures
 ■ Average of Current Total + New Revenue
 ■ Average of New Revenue - Expenses

Pekin District 108 Operations & Maintenance Fund Rate Increase (\$.10)
 (2% Increase in Revenue & 4% Increase in Expenses)



■ Average of Expenditures
 ■ Average of Current Total + New Revenue
 ■ Average of New Revenue - Expenses



Impact on Property Taxes

Proposal #1: 7-10 Years

			Current			Proposed			Impact of Proposed Increases			
Home Value	EAV	Homestead Exemption (\$3,500)	Education Fund	Operations & Maintenance	Current Total	Education Fund (+\$0.50)	Operations & Maintenance (+\$0.10)	Proposed Total				
			Rate: \$1.9091	Rate: \$0.2318			Rate: \$2.4091		Rate: \$0.3318			
\$50,000	\$16,667	\$13,167	\$251	\$31	\$282	\$317	\$44	\$361	\$79.00	\$6.58	\$1.52	\$0.22
\$75,000	\$25,000	\$21,500	\$410	\$50	\$460	\$518	\$71	\$589	\$129.00	\$10.75	\$2.48	\$0.35
\$100,000	\$33,333	\$29,833	\$570	\$69	\$639	\$719	\$99	\$818	\$179.00	\$14.92	\$3.44	\$0.49
\$125,000	\$41,667	\$38,167	\$729	\$88	\$817	\$919	\$127	\$1,046	\$229.00	\$19.08	\$4.40	\$0.63
\$150,000	\$50,000	\$46,500	\$888	\$108	\$996	\$1,120	\$154	\$1,275	\$279.00	\$23.25	\$5.37	\$0.76
\$175,000	\$58,333	\$54,833	\$1,047	\$127	\$1,174	\$1,321	\$182	\$1,503	\$329.00	\$27.42	\$6.33	\$0.90
\$200,000	\$66,667	\$63,167	\$1,206	\$146	\$1,352	\$1,522	\$210	\$1,731	\$379.00	\$31.58	\$7.29	\$1.04
\$225,000	\$75,000	\$71,500	\$1,365	\$166	\$1,531	\$1,723	\$237	\$1,960	\$429.00	\$35.75	\$8.25	\$1.18
\$250,000	\$83,333	\$79,833	\$1,524	\$185	\$1,709	\$1,923	\$265	\$2,188	\$479.00	\$39.92	\$9.21	\$1.31
\$275,000	\$91,667	\$88,167	\$1,683	\$204	\$1,888	\$2,124	\$293	\$2,417	\$529.00	\$44.08	\$10.17	\$1.45
\$300,000	\$100,000	\$96,500	\$1,842	\$224	\$2,066	\$2,325	\$320	\$2,645	\$579.00	\$48.25	\$11.13	\$1.59



Questions & Discussion

District 108

Informational Meeting